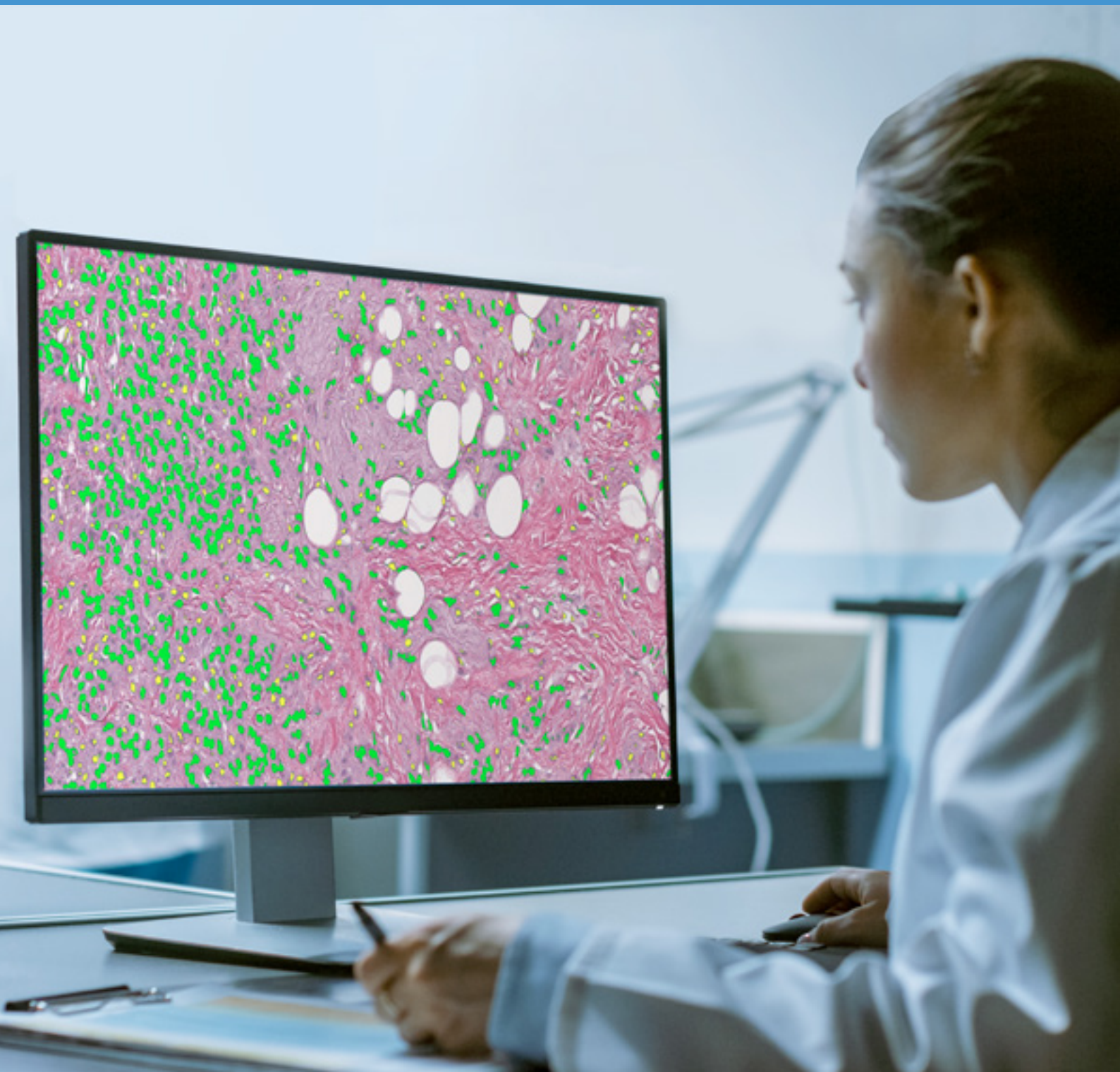
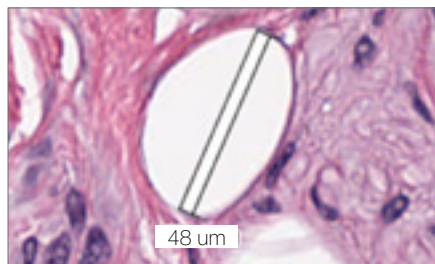
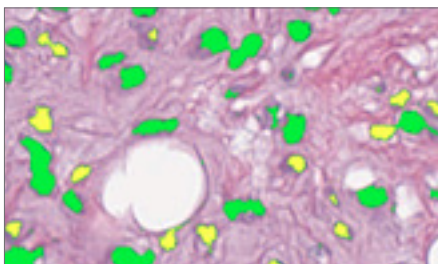
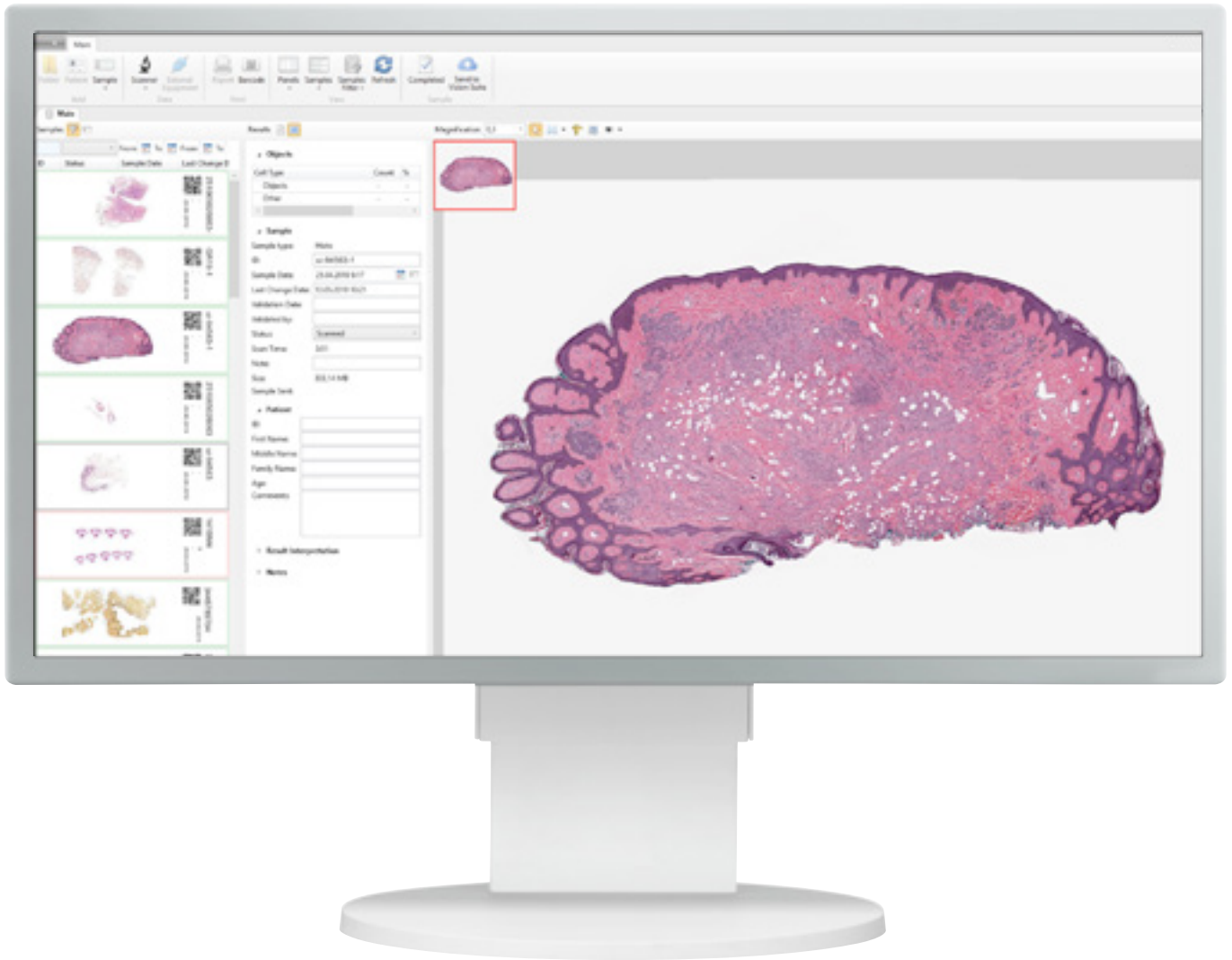


Digital Slide Scanners



Application Module

Vision Slide



Object analysis

Objects classification by specified criteria.

Count and classification

Automatic or manual object identification on the digital slide. Measurements of linear and optical parameters for particles.

Marks and comments

Make your comments and put marks on a digital slide.

Administrative Module

Vision Remote



Remote workstation.

Consulting and Education Module

Vision Suite

The screenshot shows the Vision Suite web interface. The browser address bar displays 'vision-suite.com'. The page features a table with the following columns: 'Image View', 'List', 'Sample Date', 'ID', 'Sample', 'Size', and 'Note'. The table contains seven rows of data, each representing a histology image. Each row includes a small thumbnail of the image, a list icon, a sample date, an ID number, the word 'Histu', and a file size.

Image View	List	Sample Date	ID	Sample	Size	Note
		12/05/2016, 9:49 PM	2850	Histu	71 KB	
		12/05/2016, 9:49 PM	2849	Histu	437.4 KB	
		12/05/2016, 9:44 PM	2848	Histu	345.3 KB	
		12/05/2016, 9:39 PM	2847	Histu	400.3 KB	
		12/05/2016, 7:33 PM	4814	Histu	1.8 KB	
		12/05/2016, 7:33 PM	4858	Histu	905.7 KB	
		12/05/2016, 7:33 PM	4857	Histu	1.8 KB	

Cloud/server for telemedicine and remote consultations with colleagues.

Specifications



Vision Assist
Cell Imaging Analyzer



Vision Pro
Cell Imaging Analyzer



Vision Ultimate
Cell Imaging Analyzer

Application module: Vision Slide	Application module: Vision Slide	Application module: Vision Slide
Working modes: queue (only 4 slides version)	Working modes: queue, random access	Working modes: queue, continuous and random access, STAT testing, 24/7
Automatic scanning	Automatic scanning	Automatic scanning
1 or 4 slides	8 slides	Up to 200 slides
Manual slide handling	2 cassettes with slides	Automatic slide handling
Microscope for scanning	Microscope for scanning	Microscope for scanning
Personal computer	Personal computer	Personal computer
Monitor	Monitor	Monitor
—	—	Touch-screen monitor for control
—	Built-in barcode reader (optional)	Built-in barcode reader
—	Automatic oil dispenser (optional)	Automatic oil dispenser (optional)
Optical system: 20x*	Optical system: 20x*	Optical system: 10x, 20x*
Bright field	Bright field	Bright field
Köhler illumination, LED	Köhler illumination, LED	Köhler illumination, LED
Bidirectional LIS, LIS2-A2 (ASTM), HL7, Ethernet	Bidirectional LIS, LIS2-A2 (ASTM), HL7, Ethernet	Bidirectional LIS, LIS2-A2 (ASTM), HL7, Ethernet
Art. N.: 71150.00.011 (1 slide) Art. N.: 71450.00.011 (4 slides)	Art. N.: 72852.00.011 (8 slides)	Art. N.: 73051.00.011 (200 slides)

* Ask for a full list of available options when ordering

Please check the intended use and the registration in your local regulation. Depending on the regulations of the respective region, some products may be used for research purpose only.

Pre-classification has to be validated by the specialist reviewing the galleries of cells. We reserve the right to change specification without notice.



Manufacturer:
West Medica Produktions- und Handels-GmbH
Brown-Boveri-Straße 6, B17-1, 2351 Wiener Neudorf, Austria
tel.: +43 (0) 2236 892465, fax: +43 (0) 2236 892464
vienna@westmedica.com, www.westmedica.com

For distributor