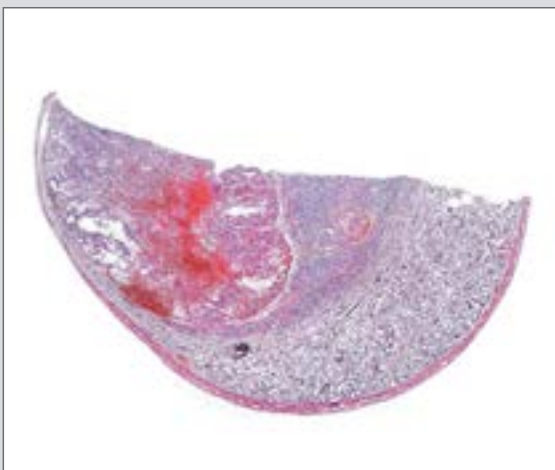
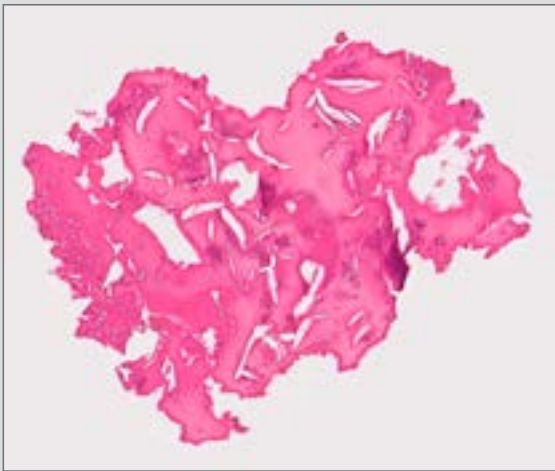
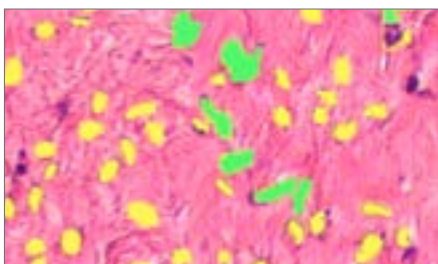
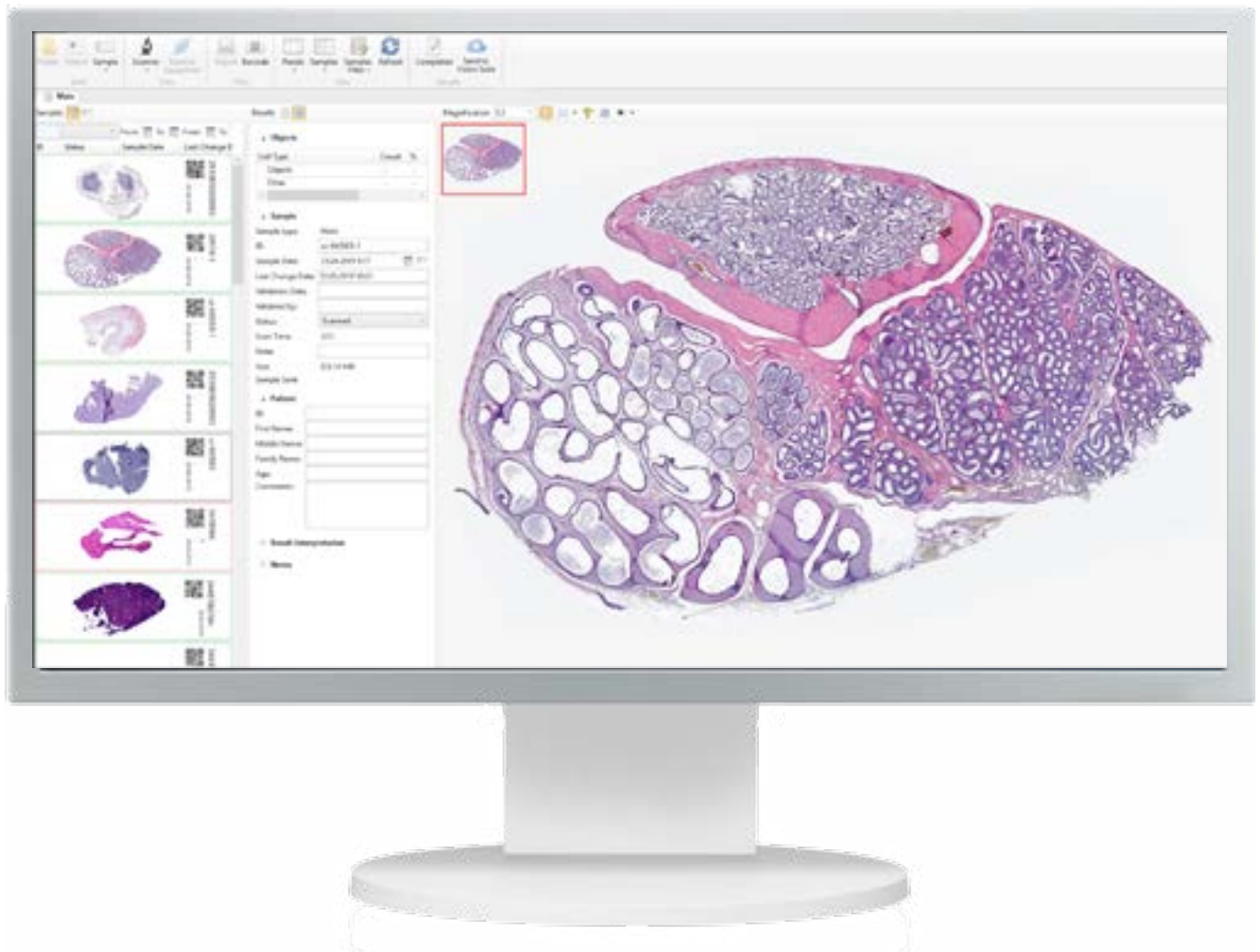


Digital Slide Scanners for Veterinary



Digital slide scanners for veterinary Vision Slide Vet



Object analysis

Objects classification by specified criteria.

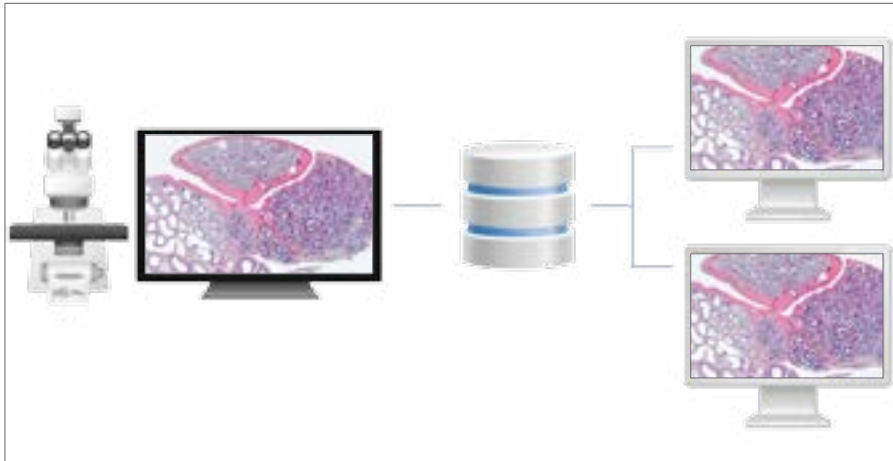
Count and classification

Automatic or manual object identification on the digital slide. Measurements of linear and optical parameters for particles.

Marks and comments

Make your comments and put marks on a digital slide.

Administrative Module Vision Remote



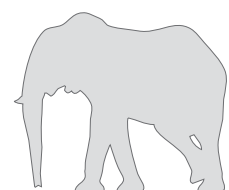
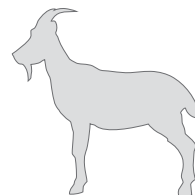
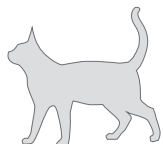
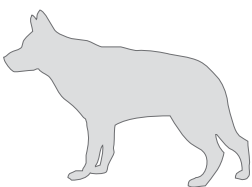
Remote workstation.

Consulting and Education Module Vision Suite

The screenshot shows the Vision Suite web interface. The browser address bar displays 'vision-suite.com'. The page title is 'Samples (10)'. The main content is a table with columns for 'Slide View', 'ID', 'ID', 'Sample Date', 'ID', 'Sample', 'Size', and 'View'. The table contains 10 rows of data, each with a small thumbnail image of a histology slide in the 'Slide View' column.

Slide View	ID	ID	Sample Date	ID	Sample	Size	View
	11	11	10/26/2016, 9:44 PM	2832	Histo	51.0 KB	
	11	11	10/26/2016, 9:44 PM	2844	Histo	437.6 KB	
	11	11	10/26/2016, 9:44 PM	2846	Histo	385.5 KB	
	11	11	10/26/2016, 9:29 PM	2847	Histo	400.2 KB	
	11	11	10/26/2016, 7:22 PM	2814	Histo	74.0 KB	
	11	11	10/26/2016, 7:22 PM	2838	Histo	365.7 KB	
	11	11	10/26/2016, 7:22 PM	2837	Histo	74.0 KB	

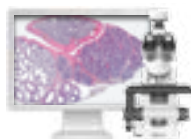
Cloud/server for telemedicine and remote consultations with colleagues.



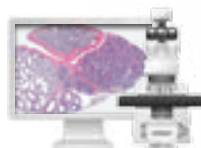
Specifications



Vision Basic
Cell Imaging Analyzer



Vision Assist
Cell Imaging Analyzer



Vision Pro
Cell Imaging Analyzer



Vision Ultimate
Cell Imaging Analyzer

Application module: Vision Slide Vet	Application module: Vision Slide Vet	Application module: Vision Slide Vet	Application module: Vision Slide Vet
Working modes: manual slide scanning	Working modes: queue (only 4 slides version)	Working modes: queue, random access	Working modes: queue, continuous and random access, STAT testing, 24/7
Manual scanning	Automatic scanning	Automatic scanning	Automatic scanning
1 slide	1 or 4 slides	8 slides	Up to 200 slides
Manual slide handling	Manual slide handling	2 cassettes with slides	Automatic slide handling
Microscope	Microscope for scanning	Microscope for scanning	Microscope for scanning
Personal computer	Personal computer	Personal computer	Personal computer
Monitor	Monitor	Monitor	Monitor
—	—	—	Touch-screen monitor for control
—	—	Built-in barcode reader (optional)	Built-in barcode reader
—	—	Automatic oil dispenser (optional)	Automatic oil dispenser
Optical system: 20x*	Optical system: 20x*	Optical system: 20x*	Optical system: 10x, 20x*
Bright field	Bright field	Bright field	Bright field
Köhler illumination, LED	Köhler illumination, LED	Köhler illumination, LED	Köhler illumination, LED
Bidirectional LIS, LIS2-A2 (ASTM), HL7, Ethernet	Bidirectional LIS, LIS2-A2 (ASTM), HL7, Ethernet	Bidirectional LIS, LIS2-A2 (ASTM), HL7, Ethernet	Bidirectional LIS, LIS2-A2 (ASTM), HL7, Ethernet
Art. N.: 64030.06.011 (1 slide)	Art. N.: 71150.06.011 (1 slide) Art. N.: 71450.06.011 (4 slides)	Art. N.: 72852.06.011 (8 slides)	Art. N.: 73051.06.011 (200 slides)

* Ask for a full list of available options when ordering

Please check the intended use and the registration in your local regulation. Depending on the regulations of the respective region, some products may be used for research purpose only.

Pre-classification has to be validated by the specialist reviewing the galleries of cells. We reserve the right to change specification without notice.



Manufacturer:
West Medica Produktions- und Handels-GmbH
Brown-Boveri-Straße 6, B17-1, 2351 Wiener Neudorf, Austria
tel.: +43 (0) 2236 892465, fax: +43 (0) 2236 892464
vienna@westmedica.com, www.westmedica.com

For distributor