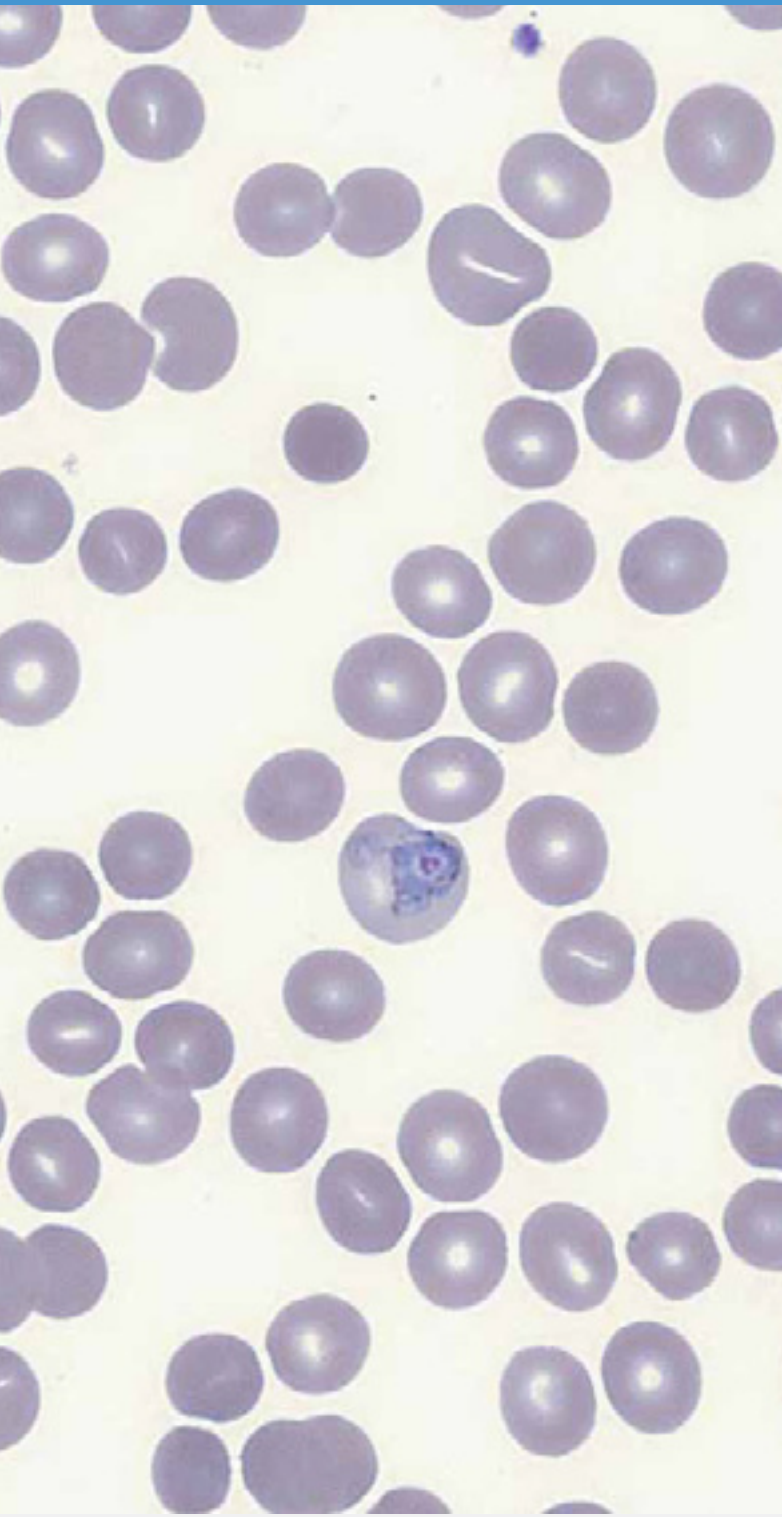
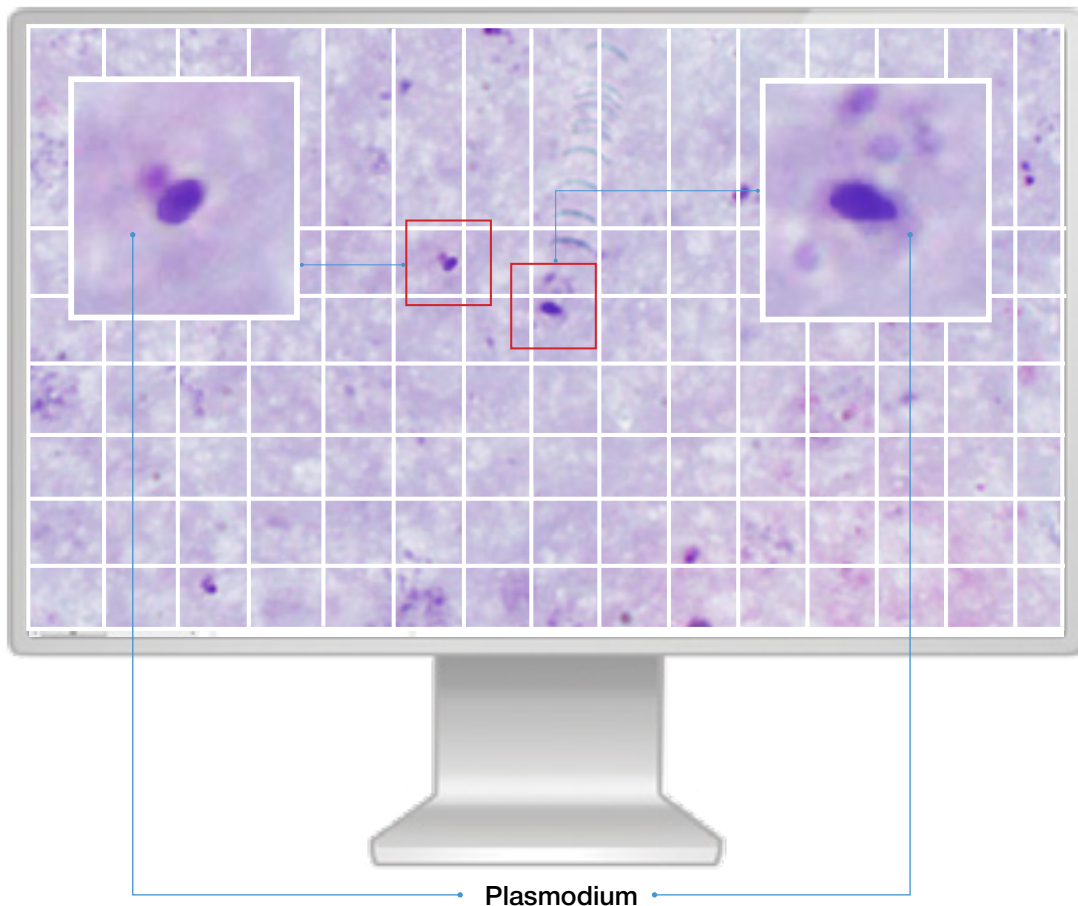


Vision Malaria

Evaluation of blood smears for hemoparasites



Evaluation of blood smears for hemoparasites



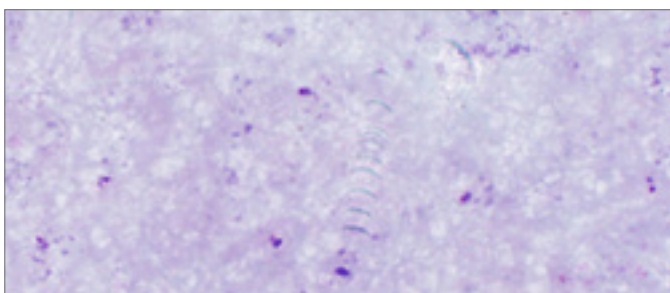
Plasmodium

— Digital slide for thick smear to detect plasmodium.
Automatic scanning of 100 fields of view

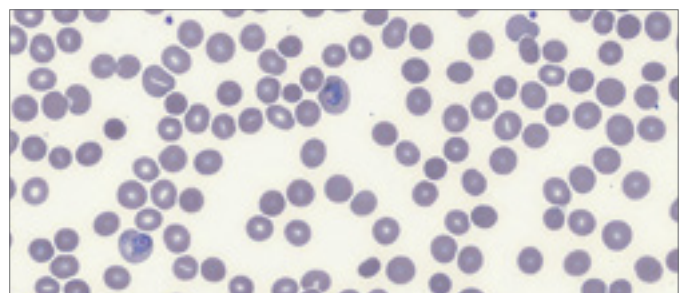
— Digital slide for thin smear to detect plasmodium type.
Automatic scanning of samples with RBC calculation
(up to 800 fields)

— In accordance with RBC collected plasmodium present is identified by the user by reviewing the collected fields of view

— Jekel algorithm — algorithm proposes standard procedure to identify plasmodium type
— Calculation of percentage parasitemia



Digital slide for thick smear



Digital slide for thin smear

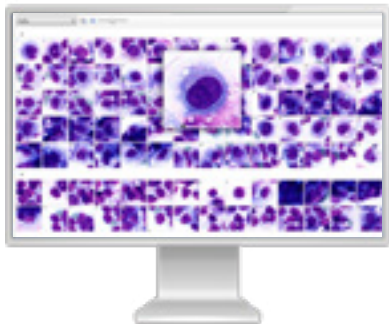
Sample Attributes
 Jekel Algorithm
 Index "A" Have you ever been in a malaria risk area (for example: Africa, Asia, Latin America, etc.)?
 Have you ever been to Malaysia?
 Did you ever receive a blood transfusion?
 Have you been to international airports?
 Do you have flu-like symptoms as fever, shivering.

Jekel algorithm

banana-shaped gametocytes (sexual form of the parasite)?
 Index "E" Do you frequently find only 1 ring form in the non-enlarged infected erythrocytes?
 Do the infected non-enlarged erythrocytes sometimes show band-shaped trophozoites?

Calculation of percentage parasitemia

Automatic scanning systems



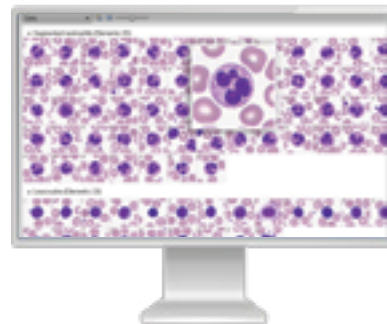
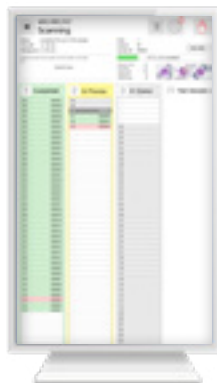
Vision Assist

- For small-sized laboratories
- Manual slide handling
- Models for 1 or 4 slides
- Automatic slide scanning
- Automatic analysis and pre-classification



Vision Pro

- For medium- and large-sized laboratories
- 2 cassettes with slides
- Loading up to 8 slides simultaneously
- Automatic slide scanning
- Automatic analysis and pre-classification
- Random access
- Built-in barcode reader (optional)
- Automatic oil dispenser (optional)



- For large- and medium-sized laboratories
- Automatic slide handling
- Loading up to 200 slides simultaneously
- Automatic slide scanning

- Automatic analysis and pre-classification
- Random access and STAT testing
- High scanning speed and whole slide imaging
- Walk away mode and night work

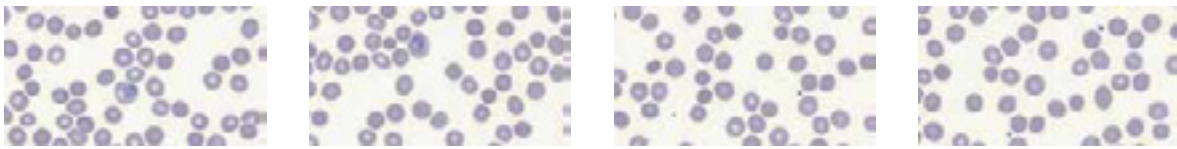
Evaluation of blood smears for hemoparasites in accordance with WHO recommendations

1 Digital slide for thick smear to detect plasmodium

Automatic scanning of 100 fields of view.

2 Digital slide for thin smear to detect plasmodium type

Automatic scanning of samples with RBC calculation (up to 800 fields) / 80 000 RBC



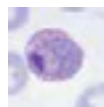
3 Plasmodium type is identified by user, reviewing the collected fields of view

4 Jekel algorithm

Algorithm proposes standard procedure to identify plasmodium type.



Plasmodium falciparum



Plasmodium vivax



Plasmodium malariae



Plasmodium ovale

5 Calculation of percentage parasitemia

We reserve the right to change specification without notice.



West Medica Produktions- und Handels-GmbH
Brown-Boveri-Straße 6, B17-1,
2351 Wiener Neudorf, Austria
tel.: +43 (0) 2236 892465, fax: +43 (0) 2236 892464
vienna@westmedica.com, www.wm-vision.com

Official Distributor