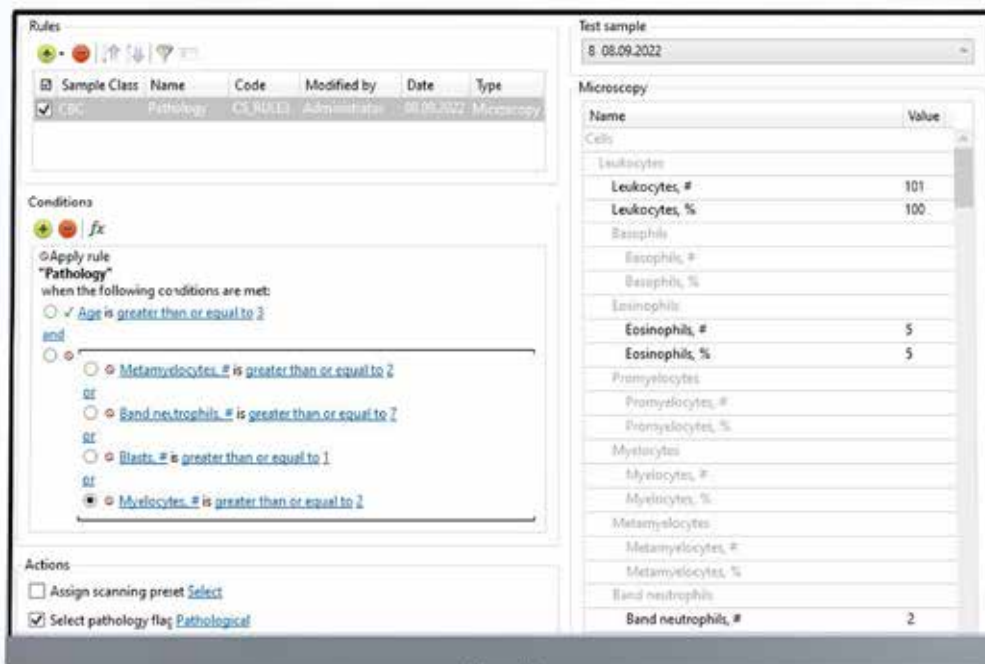


# Vision Manager

## Automation of analysis



The screenshot displays the Vision Manager software interface. On the left, a 'Rules' configuration window is open, showing a table of rules and a 'Conditions' section for a rule named 'Pathology'. The 'Conditions' section lists several criteria that must be met for the rule to apply, including 'Age is greater than or equal to 2', 'Metamyelocytes, # is greater than or equal to 2', 'Band neutrophils, # is greater than or equal to 2', 'Blasts, # is greater than or equal to 1', and 'Myelocytes, # is greater than or equal to 2'. Below the conditions, there are 'Actions' such as 'Assign scanning preset Select' and 'Select pathology flag Pathological'.

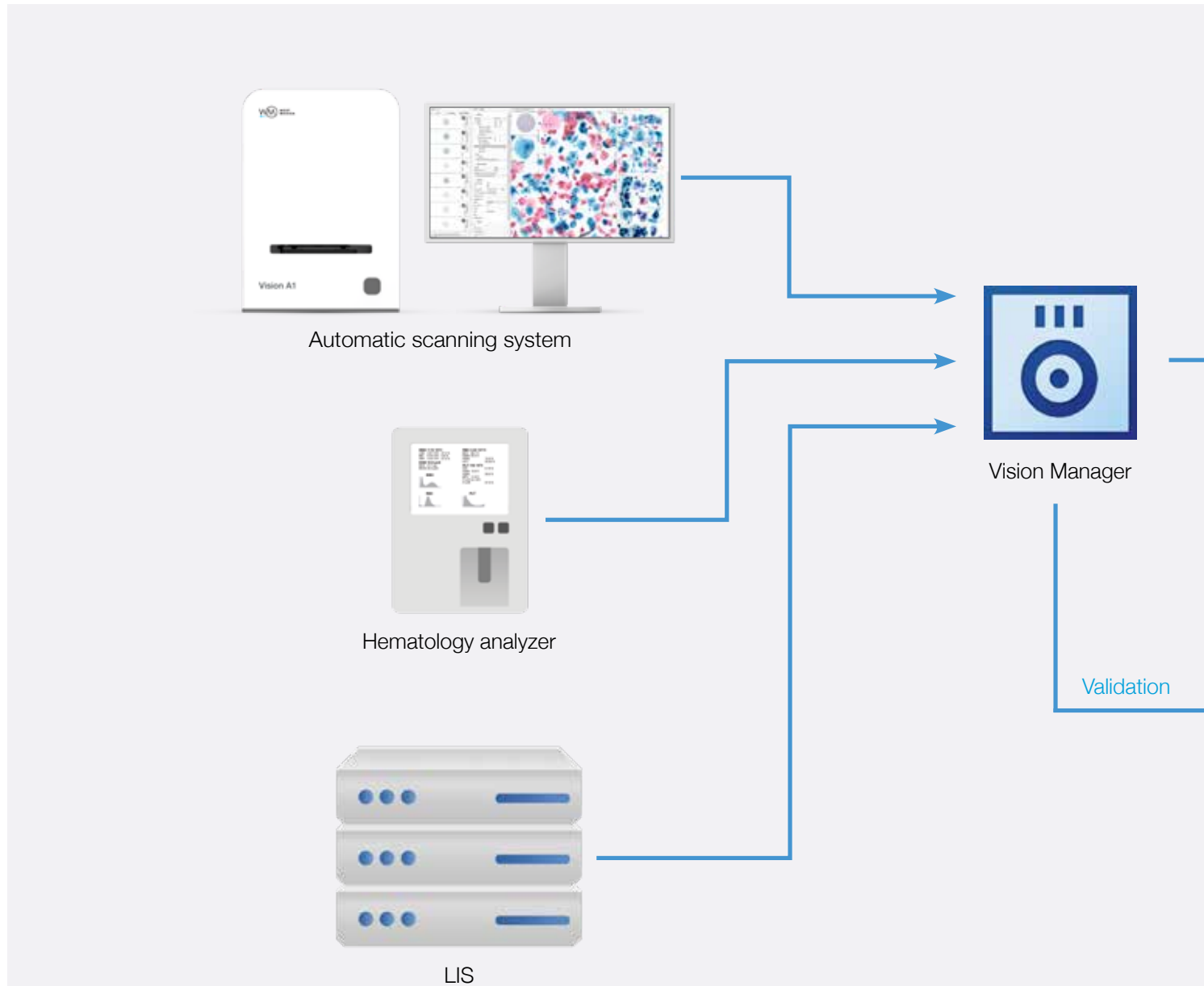
On the right, a 'Test sample' window shows the date '8.08.2022'. Below it, a 'Microscopy' results table is displayed, listing various cell counts and percentages.

Name	Value
Cells	
Leukocytes	
Leukocytes, #	101
Leukocytes, %	100
Basophils	
Basophils, #	
Basophils, %	
Eosinophils	
Eosinophils, #	5
Eosinophils, %	5
Promyelocytes	
Promyelocytes, #	
Promyelocytes, %	
Myelocytes	
Myelocytes, #	
Myelocytes, %	
Metamyelocytes	
Metamyelocytes, #	
Metamyelocytes, %	
Band neutrophils	
Band neutrophils, #	2



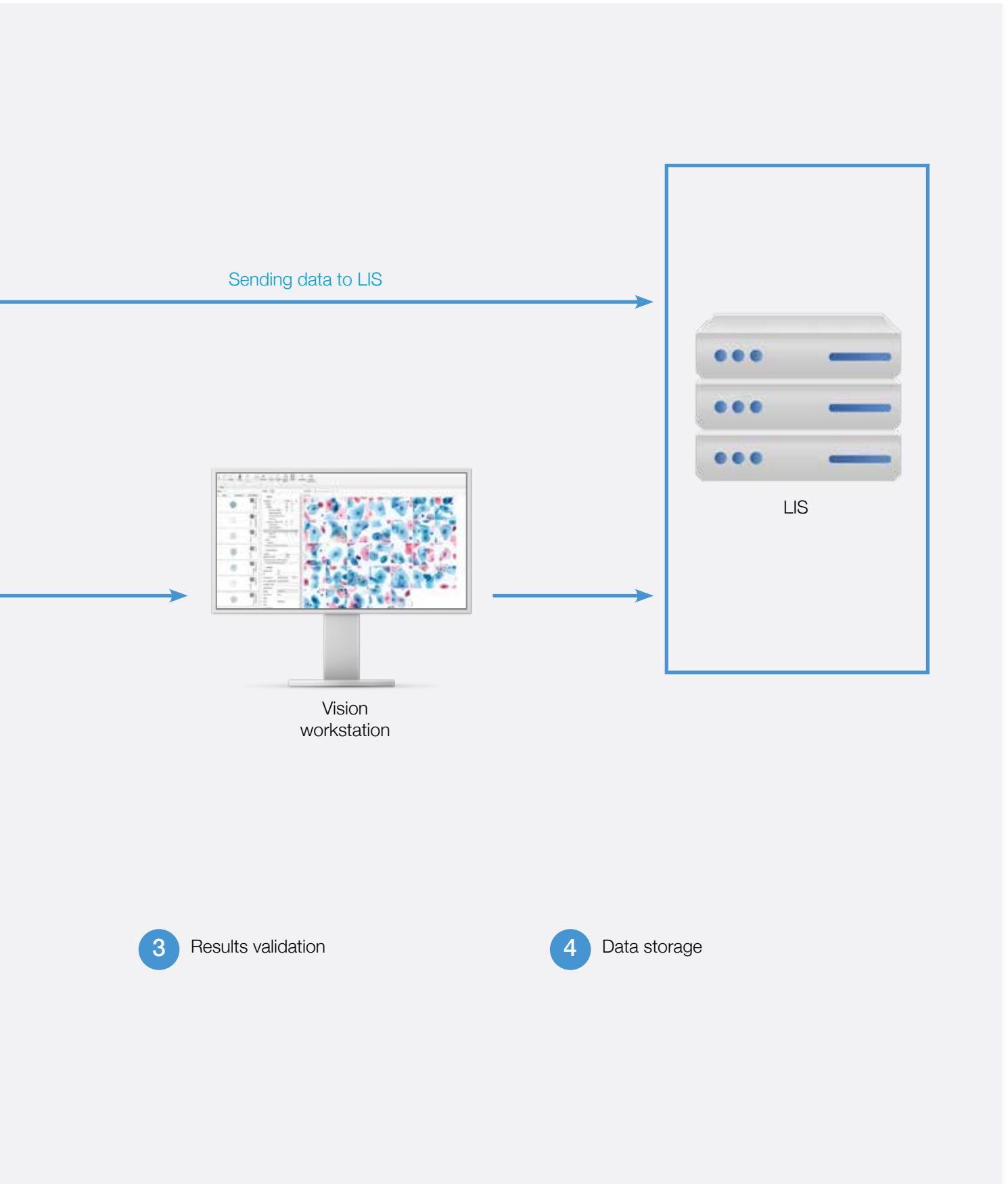
## Vision Manager

### Automation of analysis, data processing rules



**1** Obtaining data by scanning slides, from a hematology analyzer, or from LIS

**2** Automatic processing of data based on the set of rules for decision-making regarding microscopy



## Key features

- Processing of data based on the set rules and algorithms
- Receiving data from automated scanning systems, hematology analyzers or from LIS
- Automatic decisions on necessary actions with a sample: prescribe a doctor, change status, establish the interpretation of the result, etc.
- Validation and control of results

---

**Vision Manager** is the ultimate workplace manager, a reflection of the real-life laboratory hierarchy that helps clinicians and lab employees to manage daily operations related to: lab customers, work stations, rules, tests, patients and users.

Vision Manager provides efficient automation of routine work processes, giving the staff more time to complete other important and non-recurring tasks. The system covers all pathological analysis profiles automatically and offers full customization. Workplaces to perform various analyses are arranged in a single working network.

Pre-classification has to be validated by the specialist reviewing the galleries of cells.  
Please check the intended use and the registration in your local regulation.  
Depending on the regulations of the respective region, some products may be used for research purpose only.  
We reserve the right to change specification without notice.



West Medica Produktions- und Handels-GmbH  
Brown-Boveri-Straße 6, B17-1  
2351 Wiener Neudorf, Austria  
tel.: +43 (0) 2236 892465, fax: +43 (0) 2236 892464  
vienna@westmedica.com, www.wm-vision.com

Official Distributor