

Hematology

Digital Morphology of Blood cells

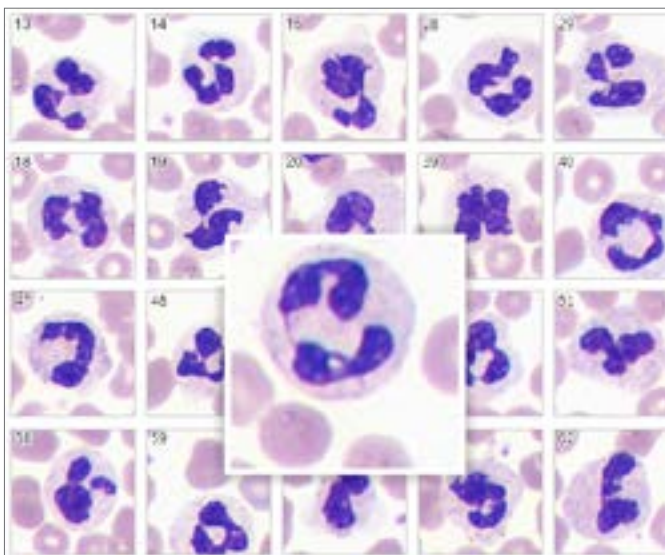


Clinical Application Module

Vision Hema

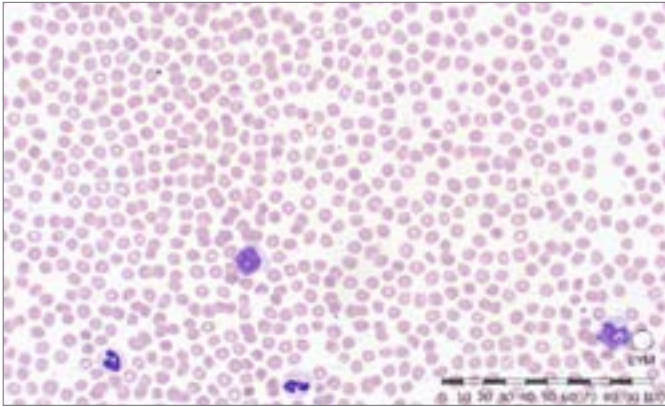
The screenshot displays the Vision Hema software interface. On the left, a 'Samples' table lists various samples with their status and last change dates. The central 'Results' table provides a detailed count and percentage for various cell types. On the right, a grid of microscopic images shows individual cells, with a larger, magnified view of a segmented neutrophil overlaid on top.

Cell Type	Count	%
Leukocytes	98	100
Basophils	-	-
Eosinophils	-	-
Promyelocytes	-	-
Myelocytes	-	-
Metamyelocytes	-	-
Band neutrophils	-	-
Segmented neutrophils	83	84.7
Lymphocytes	8	8.2
Monocytes	4	4.1
Plasma cells	-	-
Reactive lymphocytes	-	-
Large granular lymphocytes	-	-
Polymphocytes	-	-
Atypical lymphocytes	-	-
Blasts	-	-
Searcy cells	-	-
Hairy cells	-	-
Unknown	-	-
Non-WBC	-	-
Asterisks	3	3.1
Smudge cells	4	4.1
Erythroblasts (NRBC)	-	-
Giant platelets	-	-
Platelets aggregations	-	-
Megakaryocytes	-	-



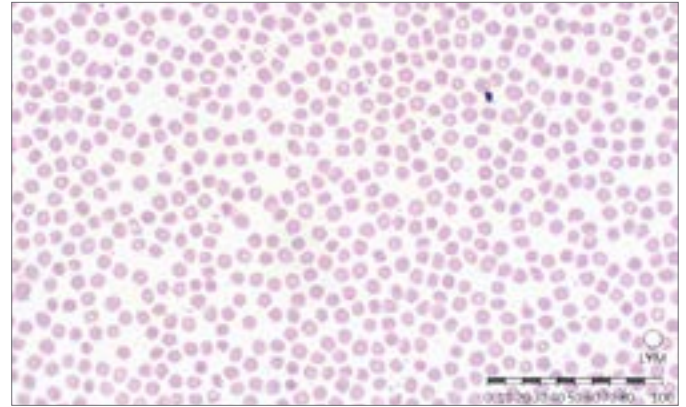
Identification and pre-classification of leucocytes

- Basophils
- Eosinophils
- Promyelocytes
- Myelocytes
- Metamyelocytes
- Band neutrophils
- Segmented neutrophils
- Lymphocytes
- Monocytes
- Reactive lymphocytes
- Blasts
- Erythroblasts



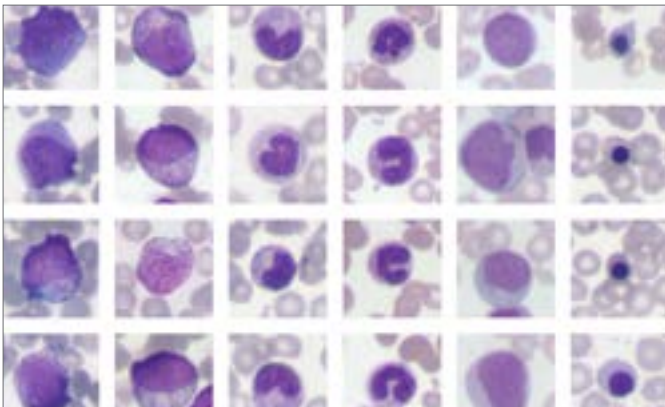
Analysis of erythrocytes

- Size
- Color
- Shape
- Inclusions



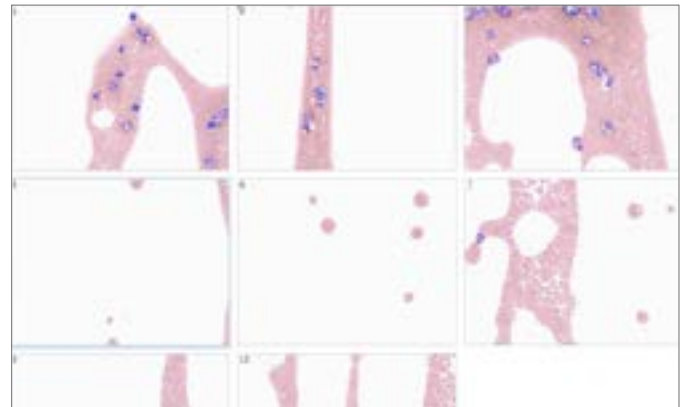
Analysis of platelets

- Normal
- Micro
- Macro



Analysis of pathological and complex cells

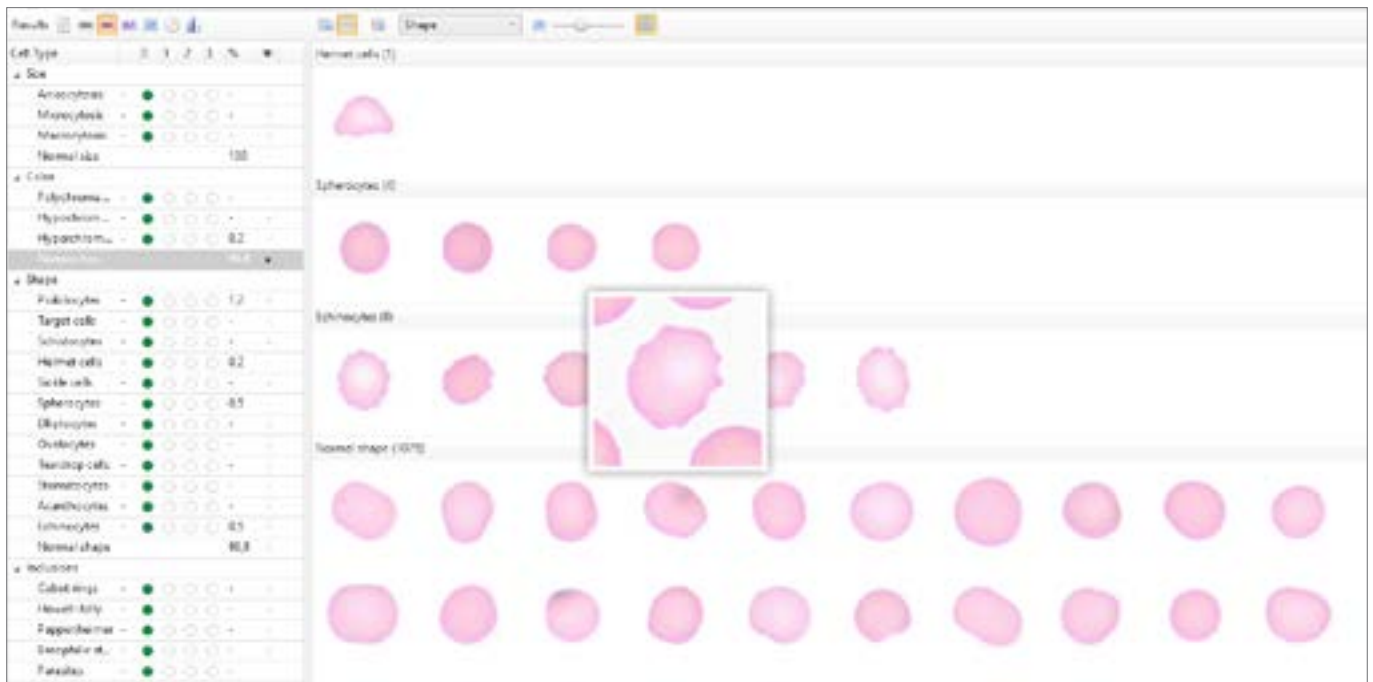
- Cells with degenerative changes
- Immature forms of neutrophils
- Atypical forms of lymphocytes
- Blasts
- Erythroblasts, smudge cells and other non-WBC cells



Scanning of blood smear tail

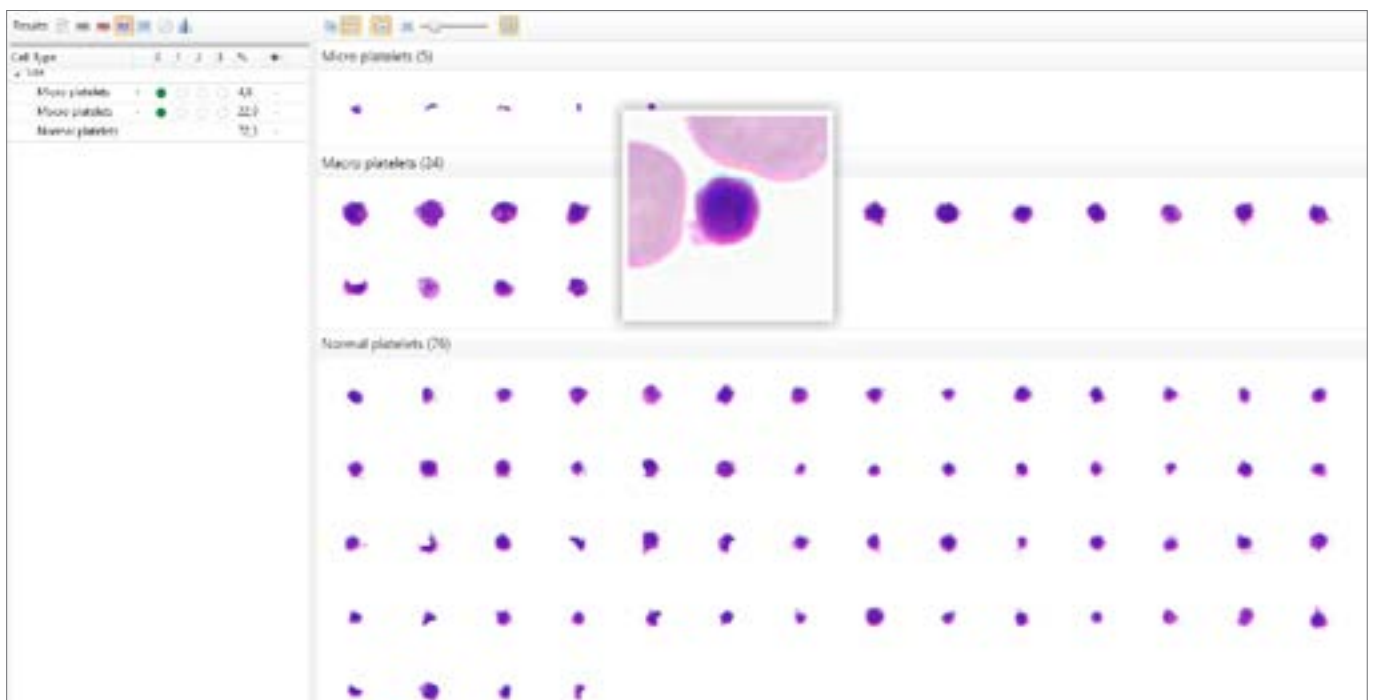
- Additional assessment of atypical forms of leukocytes
- Assessment of platelet aggregations

Additional modules Vision Extended RBC



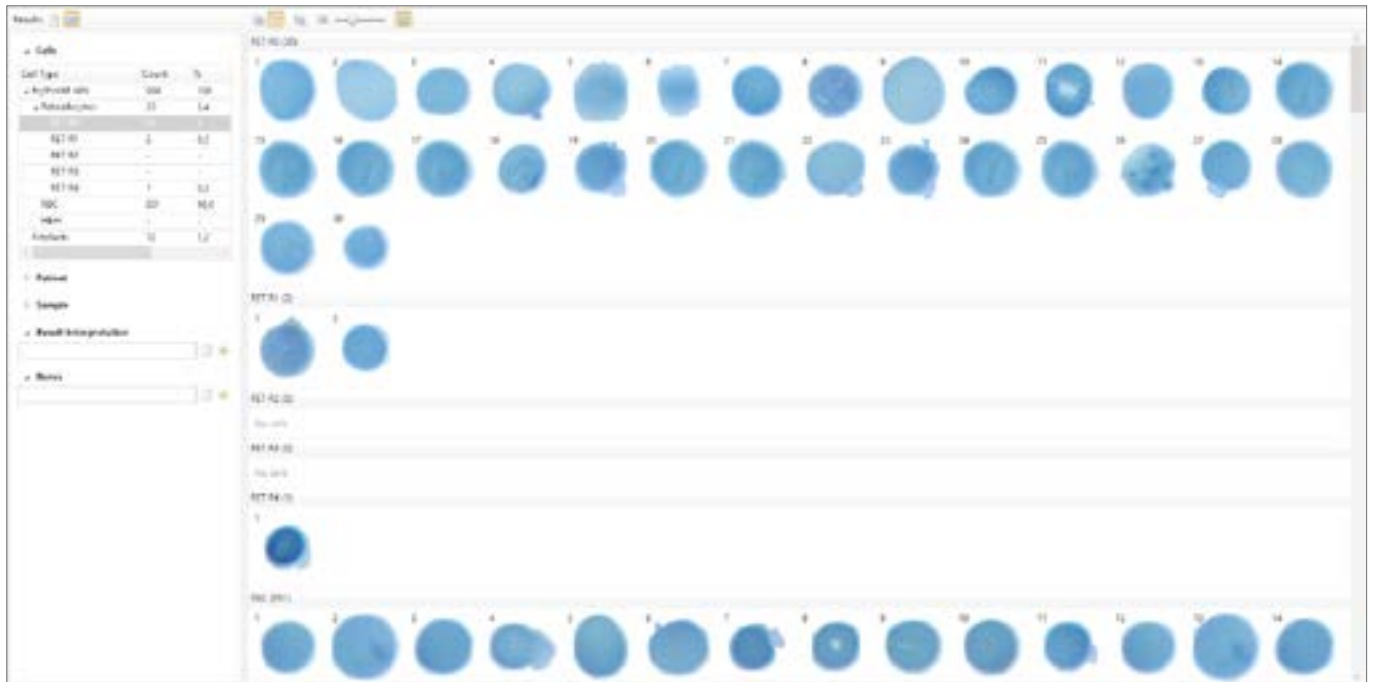
Automatic identification of erythrocytes by size, color, forms and inclusions. Pre-classification of erythrocytes by 21 parameters. Detailed information of every erythrocyte.

Vision Extended PLT



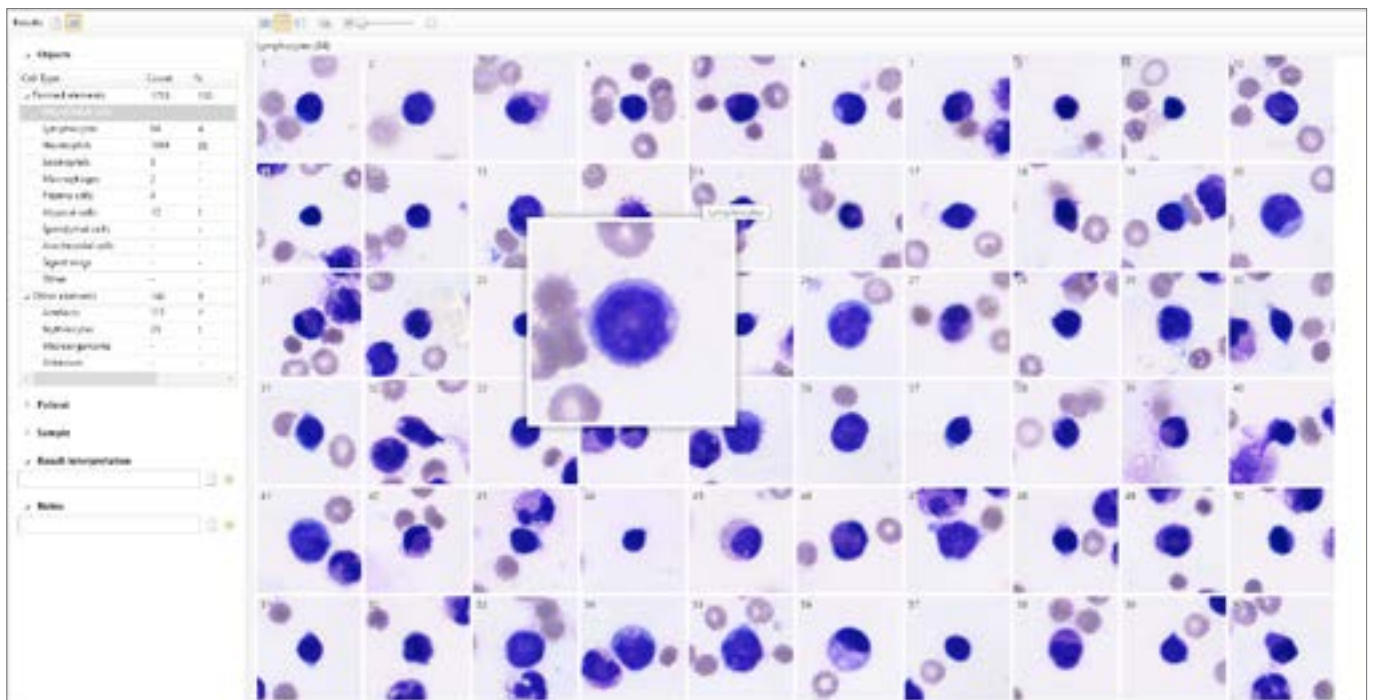
Automatic identification and pre-classification of platelets by 3 parameters: micro, macro, normal. Detailed information of every platelet.

Vision RET



Automatic identification and pre-classification of reticulocytes by classes.

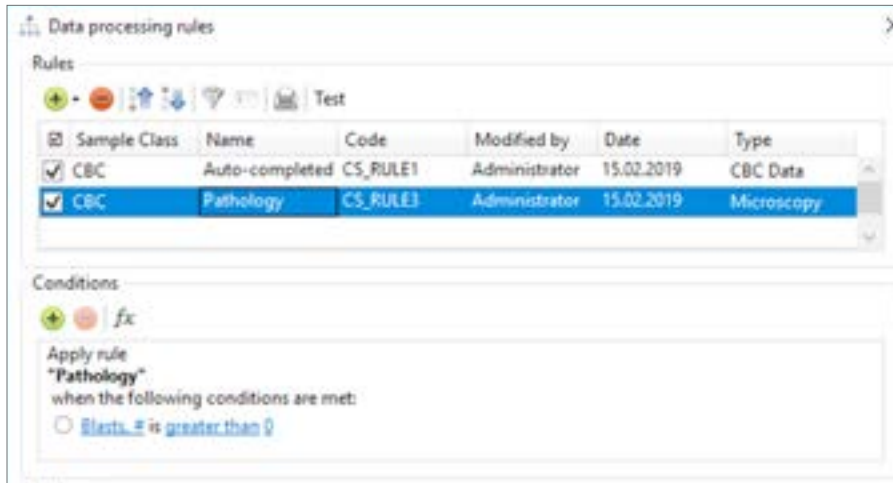
Vision Body Fluids



Automatic identification and pre-classification of cells in human body fluids.

Administrative Modules

Vision Manager



Analysis procedure automation, data processing rules created by the specialist.

Vision Remote



Remote workstation.

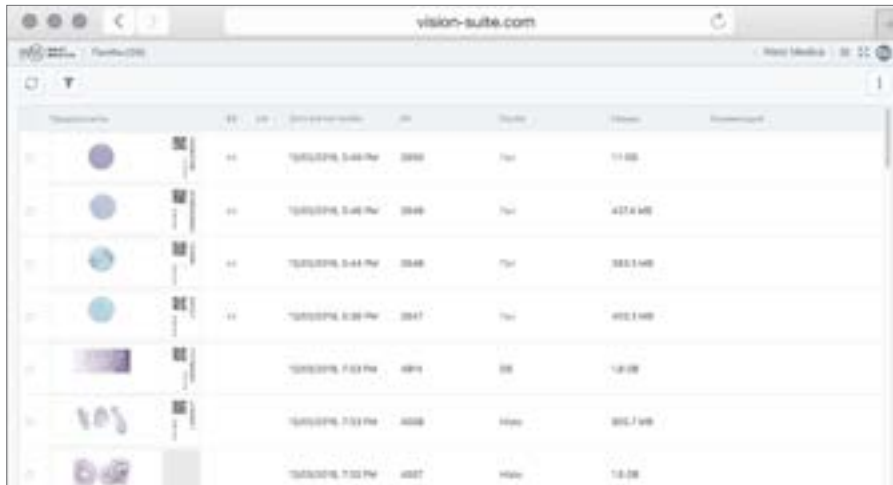
Artificial intelligence



Artificial intelligence (AI) cumulates algorithms and technologies that allow computers to learn and solve intellectual tasks provided by humans.

AI speeds up processing and interpretation of data, and allows to efficiently perform the most comprehensive tasks, including medical image analysis.

Consulting and Education Modules Vision Suite



ID	Date	Time	Status	Duration
1	10/10/2016	5:44 PM	Done	11:00
2	10/10/2016	5:46 PM	Done	427.6 MB
3	10/10/2016	5:44 PM	Done	383.1 MB
4	10/10/2016	6:28 PM	Done	492.1 MB
5	10/10/2016	7:03 PM	Done	1:20:00
6	10/10/2016	7:03 PM	Done	392.7 MB
7	10/10/2016	7:03 PM	Done	1:4:00

Cloud/server for telemedicine and remote consultations with colleagues.

Vision Expertise



Online testing and quality control.
www.vision-expertise.com

Clinical applications



The latest developments of artificial intelligence provide a solution for the tasks connected with automation in digital microscopy.

Our technologies speed up the diagnostic process, reduce analysis time and lower subjectivity of the results received.

They improve the efficiency of laboratory routine operation, bringing microscopy analyses in line with state-of-the-art standards.

Specifications



Vision Assist
Cell Imaging Analyzer



Vision Pro
Cell Imaging Analyzer



Vision Ultimate
Cell Imaging Analyzer

Application module: Vision Hema	Application module: Vision Hema	Application module: Vision Hema
Additional modules: Vision Extended RBC Vision Extended PLT Vision RET Vision Body Fluids Vision Malaria	Additional modules: Vision Extended RBC Vision Extended PLT Vision RET Vision Body Fluids Vision Malaria	Additional modules: Vision Extended RBC Vision Extended PLT Vision RET Vision Body Fluids Vision Malaria
Working modes: queue (only 4 slides version)	Working modes: queue, random access	Working modes: queue, continuous and random access, STAT testing, 24/7
Automatic scanning 1 or 4 slides	Automatic scanning 8 slides	Automatic scanning Up to 200 slides
Manual slide handling	2 cassettes with slides	Automatic slide handling
Microscope for scanning	Microscope for scanning	Microscope for scanning
Personal computer	Personal computer	Personal computer
Monitor	Monitor	Monitor
—	—	Touch-screen monitor for control
—	Built-in barcode reader (optional)	Built-in barcode reader
—	Automatic oil dispenser (optional)	Automatic oil dispenser
Optical system: 10x, 50x Oil, 100x Oil	Optical system: 10x, 60x Oil, 100x Oil	Optical system: 10x, 50x Oil, 100x Oil
Bright field	Bright field	Bright field
Köhler illumination, LED	Köhler illumination, LED	Köhler illumination, LED
Bidirectional LIS, LIS2-A2 (ASTM), HL7, Ethernet	Bidirectional LIS, LIS2-A2 (ASTM), HL7, Ethernet	Bidirectional LIS, LIS2-A2 (ASTM), HL7, Ethernet
Art. N.: 71150.01(1 slide) Art. N.: 71450.01 (4 slides)	Art. N.: 72852.01 (8 slides)	Art. N.: 73011.01 (200 slides)

Please check the intended use and the registration in your local regulation. Depending on the regulations of the respective region, some products may be used for research purpose only.

Pre-classification has to be validated by the specialist reviewing the galleries of cells. We reserve the right to change specification without notice.



Manufacturer:
West Medica Produktions- und Handels-GmbH
Brown-Boveri-Straße 6, B17-1, 2351 Wiener Neudorf, Austria
tel.: +43 (0) 2236 892465, fax: +43 (0) 2236 892464
vienna@westmedica.com, www.westmedica.com

For distributor