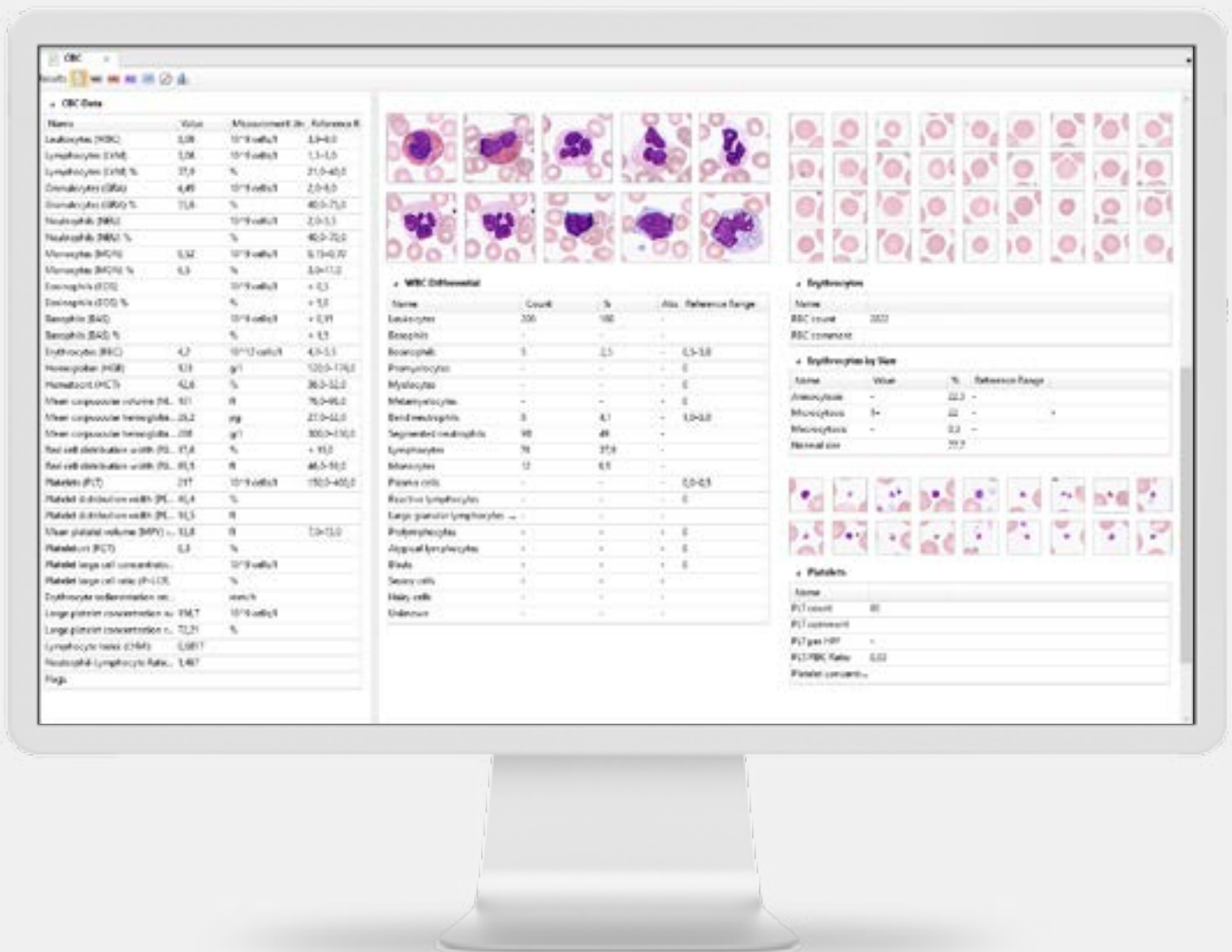


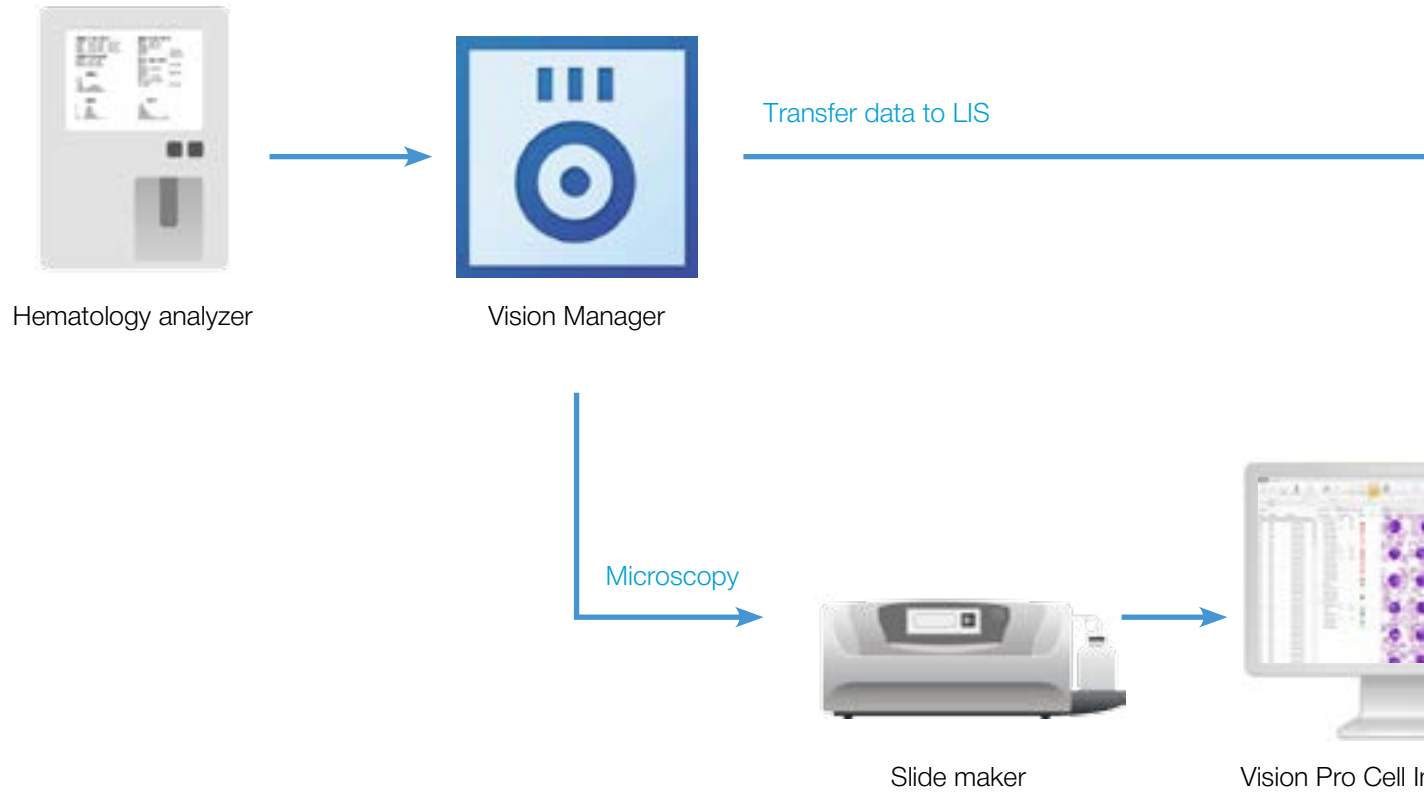
Vision Manager

Automated process of complete blood count



Hematology analyzers data processing rules and morphological blood cell analysis

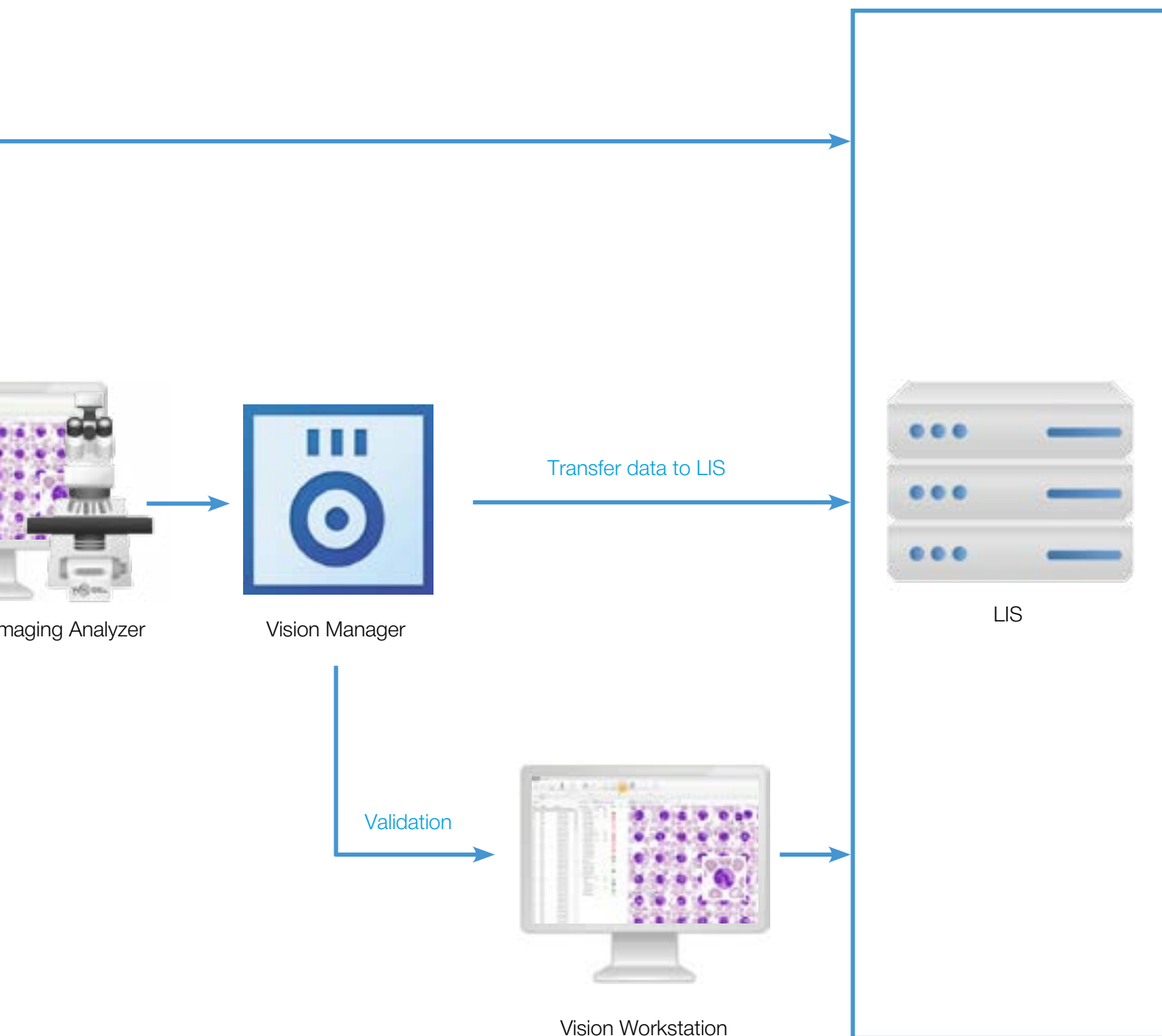
Automated process of Hematology analyzers data processing run



- 1 Hematology analyzer results are transferred to Vision Manager
- 2 Automatic processing of data based on the set of rules for decision-making regarding blood smear microscopy
- 3 Blood smear slide preparation and staining
- 4 Automatic analysis

complete blood count

files and morphological blood cell analysis



blood smear

5 Automatic processing of data related to blood smear microscopy results

6 Results validation

7 Data storage

Vision Manager

Administrative module for managing the workflow of analyses in medium sized and large laboratories.

Key features

- Transfer of data from hematology analyzers or LIS
- Processing of data based on the set rules and algorithms
- Automatic decisions about the necessary actions with samples in terms of validation of the blood smear analysis
- Validation and control of results

Vision Manager is the ultimate workplace manager, a reflection of the real-life laboratory hierarchy as it helps clinicians and lab employees to manage daily operations related to: lab clients, work stations, rules, tests, patients and users.

Vision Manager provides efficient automation of routine work processes, giving the staff more time to complete other important and non-recurring tasks. The system covers all pathological analysis profiles automatically and offers full customization. Workplaces for the process of complete blood count are arranged in a single working network.

The concept of Vision Manager is an important step in the lab workflow support software. It offers a clear general user interface and a completely new application affecting a wide range of processes from working next to the analyzer to the Manager's office responsible for monitoring.

Rules are created by the laboratory clinical direction. Vision Manager provides the tools for creation of rules under the responsibility of the laboratory clinical direction.

Please check the intended use and the registration in your local regulation. Depending on the regulations of the respective region, some products may be used for research purpose only.

We reserve the right to change specification without notice.



Manufacturer:

West Medica Produktions- und Handels-GmbH
Brown-Boveri-Straße 6, B17-1, 2351 Wiener Neudorf, Austria
tel.: +43 (0) 2236 892465, fax: +43 (0) 2236 892464
vienna@westmedica.com, www.westmedica.com

For distributor