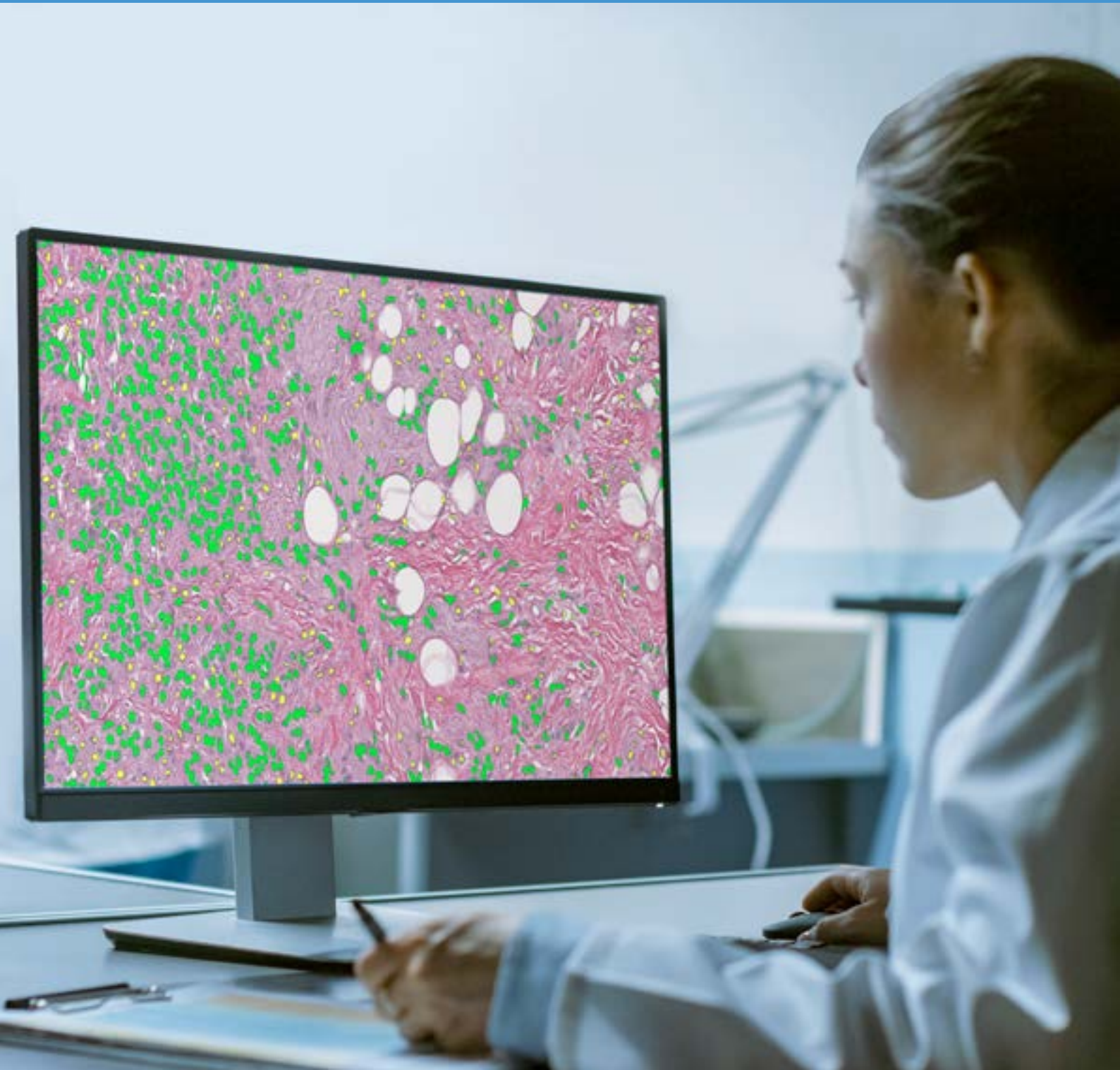
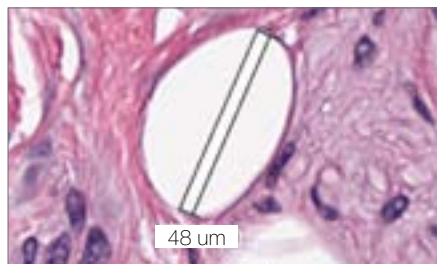
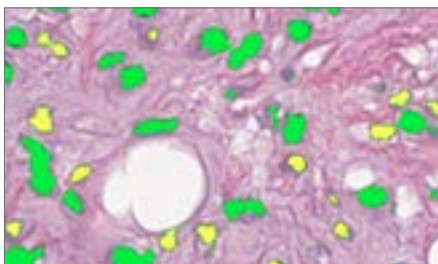
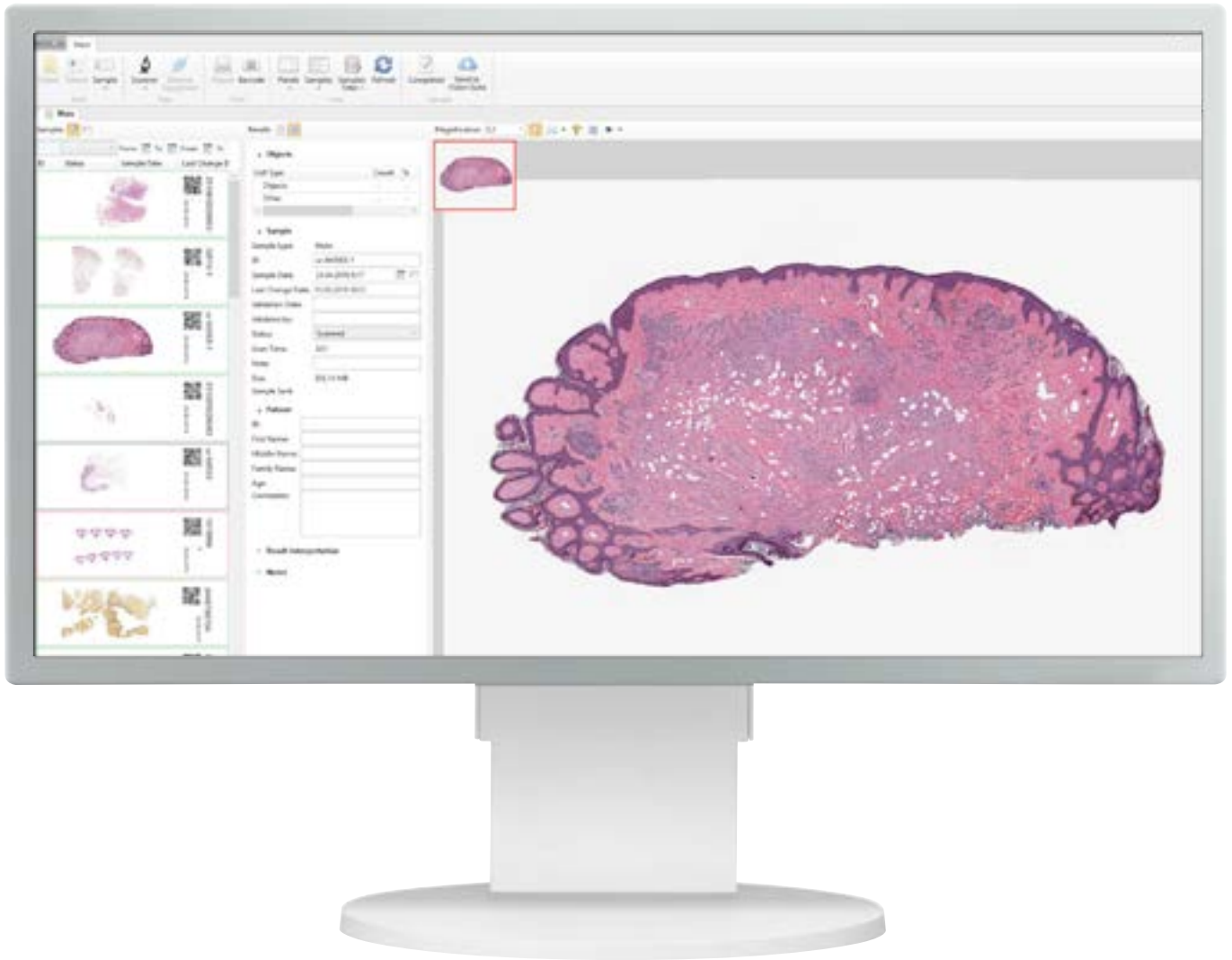


# Digital Slide Scanners



# Application Module

## Vision Slide



### **Object analysis**

Objects classification by specified criteria.

### **Count and classification**

Automatic or manual object identification on the digital slide. Measurements of linear and optical parameters for particles.

### **Marks and comments**

Make your comments and put marks on a digital slide.

# Administrative Module

## Vision Remote



Remote workstation.

# Consulting and Education Module

## Vision Suite

The screenshot shows the Vision Suite web interface. The browser address bar displays 'vision-suite.com'. The main content area features a table with the following columns: 'Image Name', 'ID', 'Series Date', 'ID', 'Series', 'Size', and 'View'. The table contains seven rows of data, each with a small thumbnail image of a histology slide.

Image Name	ID	Series Date	ID	Series	Size	View
	21	10/26/2016, 9:46 PM	2840	Histo	71.0 KB	
	21	10/26/2016, 9:46 PM	2846	Histo	437.6 KB	
	21	10/26/2016, 9:46 PM	2848	Histo	285.1 KB	
	21	10/26/2016, 9:46 PM	2847	Histo	400.2 KB	
	21	10/26/2016, 7:22 PM	2814	Histo	7.6 KB	
	21	10/26/2016, 7:22 PM	2818	Histo	200.7 KB	
	21	10/26/2016, 7:22 PM	2817	Histo	7.6 KB	

Cloud/server for telemedicine and remote consultations with colleagues.

# Specifications



**Vision Assist**  
Cell Imaging Analyzer



**Vision Pro**  
Cell Imaging Analyzer



**Vision Ultimate**  
Cell Imaging Analyzer

Application module: <b>Vision Slide</b>	Application module: <b>Vision Slide</b>	Application module: <b>Vision Slide</b>
Working modes: queue (only 4 slides version)	Working modes: queue, random access	Working modes: queue, continuous and random access, STAT testing, 24/7
Automatic scanning	Automatic scanning	Automatic scanning
1 or 4 slides	8 slides	Up to 200 slides
Manual slide handling	2 cassettes with slides	Automatic slide handling
Microscope for scanning	Microscope for scanning	Microscope for scanning
Personal computer	Personal computer	Personal computer
Monitor	Monitor	Monitor
—	—	Touch-screen monitor for control
—	Built-in barcode reader (optional)	Built-in barcode reader
—	Automatic oil dispenser (optional)	Automatic oil dispenser (optional)
Optical system: 20x*	Optical system: 20x*	Optical system: 10x, 20x*
Bright field	Bright field	Bright field
Köhler illumination, LED	Köhler illumination, LED	Köhler illumination, LED
Bidirectional LIS, LIS2-A2 (ASTM), HL7, Ethernet	Bidirectional LIS, LIS2-A2 (ASTM), HL7, Ethernet	Bidirectional LIS, LIS2-A2 (ASTM), HL7, Ethernet
Art. N.: 71150.00.011 (1 slide) Art. N.: 71450.00.011 (4 slides)	Art. N.: 72852.00.011 (8 slides)	Art. N.: 73051.00.011 (200 slides)

\* Ask for a full list of available options when ordering

Please check the intended use and the registration in your local regulation. Depending on the regulations of the respective region, some products may be used for research purpose only.

Pre-classification has to be validated by the specialist reviewing the galleries of cells. We reserve the right to change specification without notice.



Manufacturer:  
West Medica Produktions- und Handels-GmbH  
Brown-Boveri-Straße 6, B17-1, 2351 Wiener Neudorf, Austria  
tel.: +43 (0) 2236 892465, fax: +43 (0) 2236 892464  
vienna@westmedica.com, www.westmedica.com

For distributor